

**Most
Dependable
Fountains, Inc.**

OPERATIONS MANUAL

MODELS:

505 SM & 505 SMSS

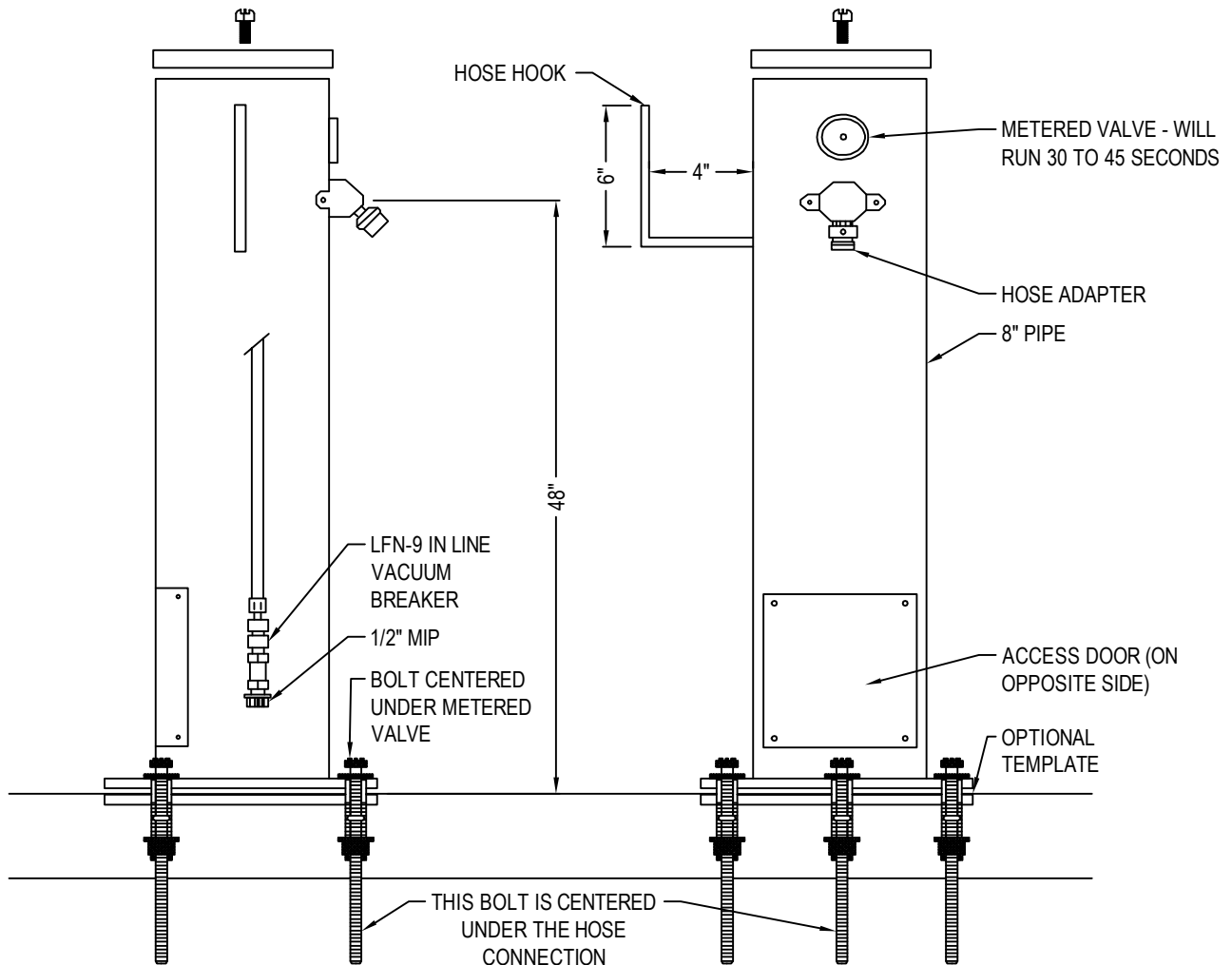
Most Dependable Fountains, IncTM

5705 Commander Drive

Arlington, TN 38002

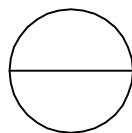
800-552-6331

www.mostdependable.com



NOTES:

1. OPTIONAL STAINLESS STEEL SURFACE CARRIER RECOMMENDED ON SURFACE MOUNT INSTALLATIONS.
2. INSTALLATION TO BE COMPLETED IN ACCORDANCE WITH MANUFACTURER'S SPECIFICATIONS.
3. DO NOT SCALE DRAWING.
4. THIS DRAWING IS INTENDED FOR USE BY ARCHITECTS, ENGINEERS, CONTRACTORS, CONSULTANTS AND DESIGN PROFESSIONALS FOR PLANNING PURPOSES ONLY. THIS DRAWING MAY NOT BE USED FOR CONSTRUCTION.
5. ALL INFORMATION CONTAINED HEREIN WAS CURRENT AT THE TIME OF DEVELOPMENT BUT MUST BE REVIEWED AND APPROVED BY THE PRODUCT MANUFACTURER TO BE CONSIDERED ACCURATE.
6. CONTRACTOR'S NOTE: FOR PRODUCT AND COMPANY INFORMATION VISIT www.CADdetails.com/info AND ENTER REFERENCE NUMBER 3354-10.35.



MODEL 505 SM RINSE STATION

SHOWN W/ OPTIONAL 6" SS SURFACE CARRIER



505 SM RINSE STATION SPECIFICATIONS

■ STANDARD PEDESTAL

OR

■ STAINLESS STEEL PEDESTAL

PUSH BAR

One piece weld construction with MDF standard 3/16" wall thickness OR

One piece weld construction with MDF standard 304 schedule 10 stainless steel. 304 stainless steel with circumference exceeding 8.6". Mushroom style push bar overlaps and prevents sand and other objects from sticking push bar in the ON position. Stainless steel housing standard on both standard and stainless steel pedestals.

HOSE BIBB CONNECTION

Stainless steel with standard hose connection.

VALVE

1/2" metered valve with 30-45 second run time.

WATER SUPPLY (LEAD FREE)

Maintenance free reinforced nylobraid tubing that is NSF-61 certified. **This tubing is not plastic.** It is supplied with a 1/2" MIP threaded inlet with a stainless steel strainer. Union fittings at every connection. Supply line stops above grade. Includes inline vacuum breaker.

FINISH

The sixteen powder coat colors listed are at no additional charge. The colors are: green, blue, brown, black, red, yellow, orange, white and textured emerald, textured sapphire, textured pyrite, textured black, textured burgandy, textured gold vein, textured copper and textured sandstone. The color chrome is available for stainless steel models only.

INSTALLATION

Surface Mount installation, is designed to be anchored on top of an existing surface (concrete, etc.) with anchor bolts through a mounting plate that is welded to the station. Surface Mount Stations provide an access door with vandal resistant stainless steel screws. Surface mount carrier recommended for all surface mount installations.

WINTERIZATION

Shut off water and drain down. Remove valve during winter months.

WARRANTY

One year warranty, labor not included.

MOST DEPENDABLE FOUNTAINS, INC.™
(800) 552-6331 • (901) 867-0039 • Fax (901) 867-4008
5705 COMMANDER DR. • ARLINGTON, TN 38002-0587
www.mostdependable.com



INSTALLATION INSTRUCTIONS

Most Dependable Fountains, Inc.™

All **SM (surface mount)** products are designed to be installed on the surface of a new or existing concrete slab. Your contractor needs to provide a 1 ½” PVC drain line (**when applicable**) and water line thru finish grade. Connections are made to our SM products thru our access door, as shown on detail drawings. The water tubing is provided with a ½” male iron pipe connection. This is an excellent location for a cutoff valve. Surface Mount units are anchored to the existing concrete by means of ½” concrete shields with bolts or we recommend ½” quick bolts.

Note: We offer an optional template which is designed to be poured in the concrete slab. It comes with the necessary vandal resist stainless steel bolts and washers need to anchor.

All **DB (direct bury)** products are designed to be installed to a depth of 14” below grade. MDF provides 1 ½” PVC drain line inside the pedestal (**when applicable**) to point of connection by others. MDF also provides reinforced nylobraid flexible tubing with a ½” male iron pipe thread for connection to water supply by others. MDF recommends an optional valve box using a PVC conduit to the pedestal. By using this option you have complete control of your product.

Individual detail drawings available Online or by request.



For more information:
Most Dependable Fountains, Inc.™
www.mostdependable.com
Info@mostdependable.com
800-552-6331
901-867-0039

LIMITED PRODUCT WARRANTY

Most Dependable Fountains, Inc.™

Most Dependable Fountains, Inc.™ warrants that all of its products are guaranteed against defective material or poor workmanship for a period of **one year from date of shipment**. Most Dependable Fountains, Inc.™ liability under this warranty shall be discharged by furnishing without charge any goods, or part thereof, which shall appear to the Company upon inspection to be of defective material or not of first class workmanship. Most Dependable Fountains, Inc.™ will not be liable for the cost of repairs, alterations or replacements, or for any expense connected therewith made by the owner or his agents. Most Dependable Fountains, Inc.™ will not be liable for any damages caused by defective materials or poor workmanship, except for replacements, as provided above. Buyer agrees that Most Dependable Fountains, Inc.™ has made no other warranties either expressed or implied in addition to those above stated. The products manufactured by Most Dependable Fountains, Inc.™ is warranted to function if installation and maintenance instructions provided are adhered to. The units also must be used for the purpose for which they were intended.

