

**Most
Dependable
Fountains, Inc.**

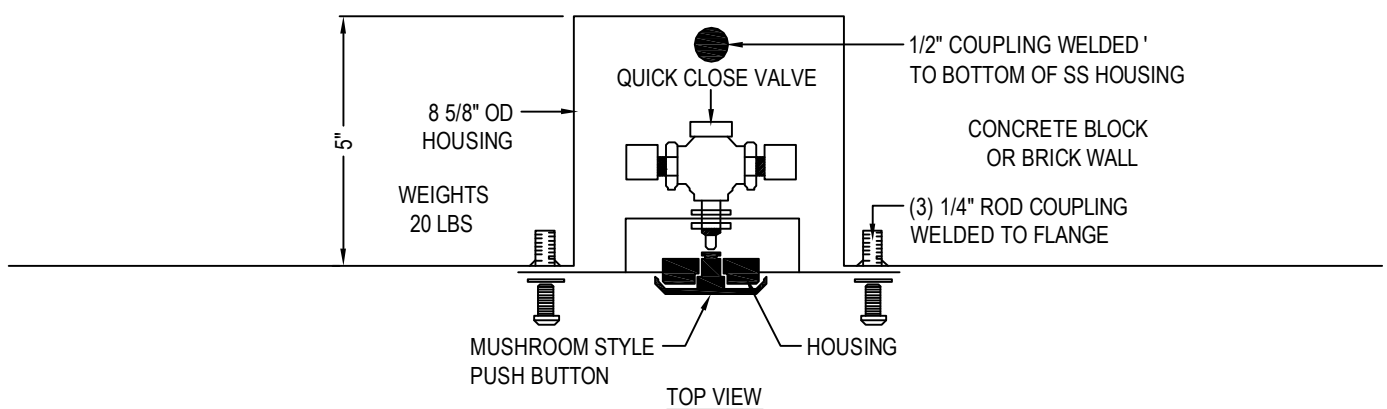
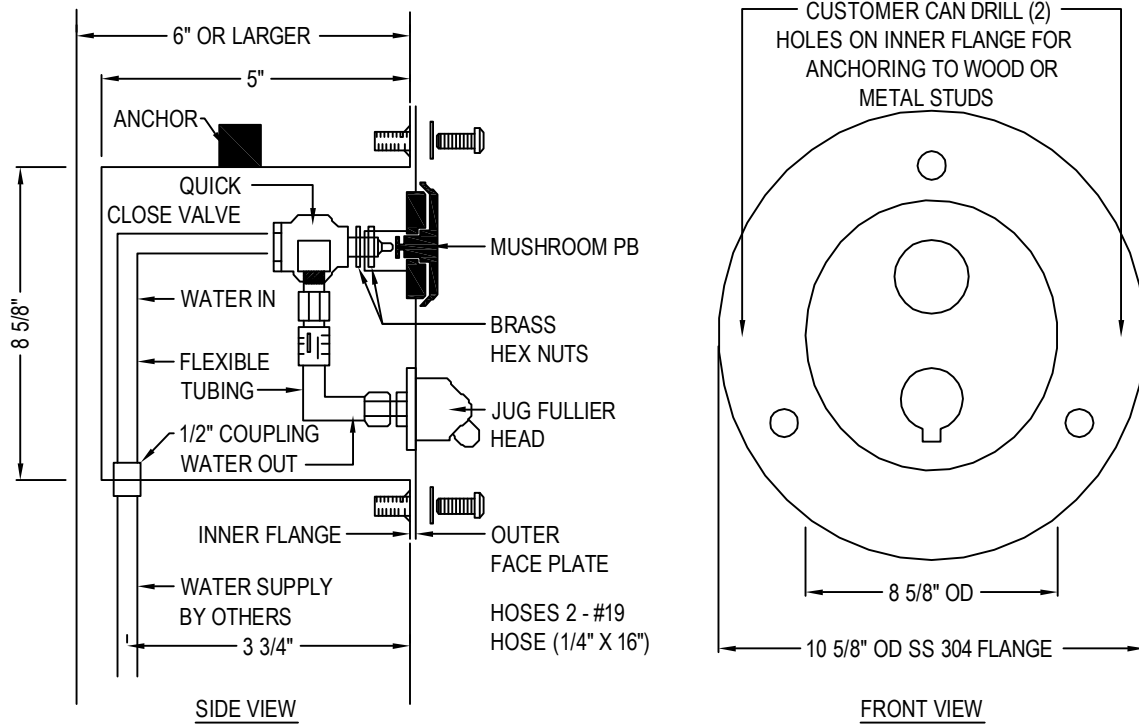
OPERATIONS MANUAL

**MODELS:
WMSSJF**

Most Dependable Fountains, IncTM
5705 Commander Drive
Arlington, TN 38002
800-552-6331
www.mostdependable.com

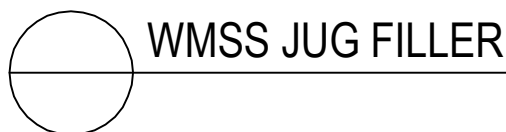


MOST DEPENDABLE FOUNTAINS, INC.
 5705 COMMANDER DR. P.O. BOX 587
 ARLINGTON, TN 38002-0587
 TOLL FREE: 1-800-552-6331
 PHONE: (901) 867-0039
 FAX: (901) 867-0159
 www.mostdependable.com



NOTES:

1. INSTALLATION TO BE COMPLETED IN ACCORDANCE WITH MANUFACTURER'S SPECIFICATIONS.
2. DO NOT SCALE DRAWING.
3. THIS DRAWING IS INTENDED FOR USE BY ARCHITECTS, ENGINEERS, CONTRACTORS, CONSULTANTS AND DESIGN PROFESSIONALS FOR PLANNING PURPOSES ONLY. THIS DRAWING MAY NOT BE USED FOR CONSTRUCTION.
4. ALL INFORMATION CONTAINED HEREIN WAS CURRENT AT THE TIME OF DEVELOPMENT BUT MUST BE REVIEWED AND APPROVED BY THE PRODUCT MANUFACTURER TO BE CONSIDERED ACCURATE.
5. CONTRACTOR'S NOTE: FOR PRODUCT AND COMPANY INFORMATION VISIT www.CADdetails.com/info AND ENTER REFERENCE NUMBER 3354-13.10.





JUG FILLER SPECIFICATIONS

■ **STANDARD PEDESTAL**

OR

■ **STAINLESS STEEL PEDESTAL**

One piece weld construction with MDF standard 3/16" wall thickness.

One piece weld construction with MDF standard 304 schedule 10 stainless steel.

PUSH BAR

304 stainless steel with circumference exceeding 8.6". Mushroom style push bar overlaps and prevents sand and other objects from sticking push bar in the ON position. Stainless steel bubbler housing standard.

CONTROL VALVE

Requires less than 5 lbs to operate. Non-cartridge O-ring valve delivers steady stream of water. No adjustment necessary. This valve design is to operate and function at 30 to 80 PSI. Ideal operating pressure is 60 PSI.

INSTALLATION

Surface Mount installation, is designed to be anchored on top of an existing surface (concrete, etc.) with anchor bolts through a mounting plate that is welded to the unit. Surface mount carrier recommended for all surface mount installations. Flush all new or existing supply lines prior to installation. 10" bury in ground for **Direct Bury** models. All direct bury models have an attached valve box with bolted cover included.

FINISH

Oven baked powder coat. Choice of colors are: green, blue, black, red, yellow, orange, brown and white. Textured color choices: emerald, sapphire, pyrite, text-black, burgundy, gold vein, copper and sand-stone. Stainless steel models are powder coated for added protection. The color chrome is available for stainless steel models only.

WINTERIZATION

Shut off water and drain down. Remove valve during winter months.

WARRANTY

One year warranty, labor not included.

SHIPPING WEIGHT

Model 125 SM..... 51 lbs. Model 125 SMSS..... 51 lbs. Model WMSSJF..... 20 lbs.

MOST DEPENDABLE FOUNTAINS, INC.™
(800) 552-6331 • (901) 867-0039 • Fax (901) 867-4008
5705 COMMANDER DR. • ARLINGTON, TN 38002-0587
www.mostdependable.com

LIMITED PRODUCT WARRANTY

Most Dependable Fountains, Inc.™

Most Dependable Fountains, Inc.™ warrants that all of its products are guaranteed against defective material or poor workmanship for a period of **one year from date of shipment**. Most Dependable Fountains, Inc.™ liability under this warranty shall be discharged by furnishing without charge any goods, or part thereof, which shall appear to the Company upon inspection to be of defective material or not of first class workmanship. Most Dependable Fountains, Inc.™ will not be liable for the cost of repairs, alterations or replacements, or for any expense connected therewith made by the owner or his agents. Most Dependable Fountains, Inc.™ will not be liable for any damages caused by defective materials or poor workmanship, except for replacements, as provided above. Buyer agrees that Most Dependable Fountains, Inc.™ has made no other warranties either expressed or implied in addition to those above stated. The products manufactured by Most Dependable Fountains, Inc.™ is warranted to function if installation and maintenance instructions provided are adhered to. The units also must be used for the purpose for which they were intended.

