

**Most  
Dependable  
Fountains, Inc.**

---

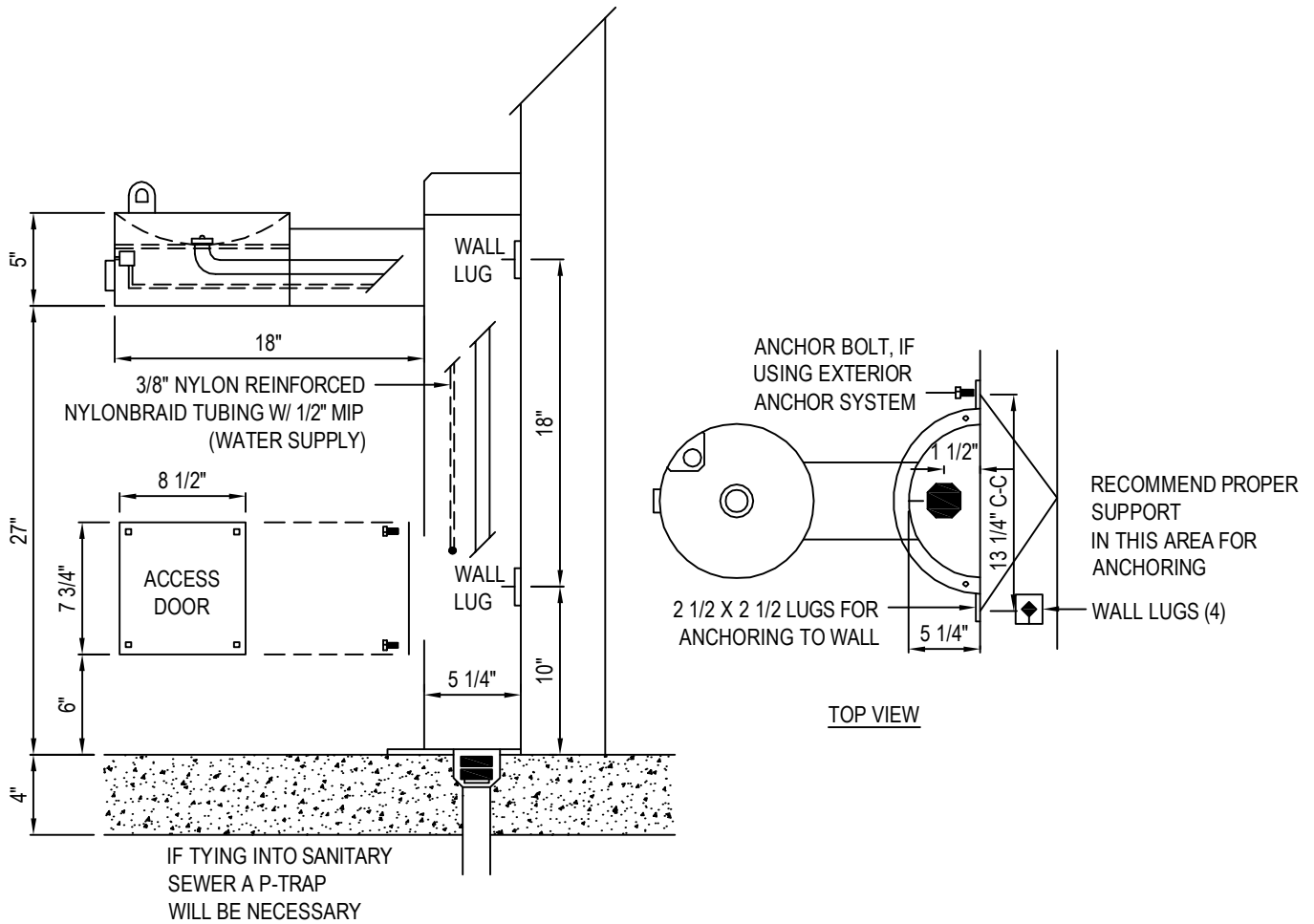
**OPERATIONS MANUAL**

**MODELS:  
410 WM & 410 WMSS**

Most Dependable Fountains, Inc<sup>TM</sup>  
5705 Commander Drive  
Arlington, TN 38002  
901-867-0039  
[www.mostdependable.com](http://www.mostdependable.com)



MOST DEPENDABLE FOUNTAINS, INC.  
 5705 COMMANDER DR. P.O. BOX 587  
 ARLINGTON, TN 38002-0587  
 PHONE: (901) 867-0039  
 www.mostdependable.com



**NOTES:**

1. SHOWN WITH EXTERIOR ANCHORING METHOD.
2. PLUMBING CAN BE ROUGHED IN OUTSIDE, INSIDE OR IN THE WALL.
3. DRAIN LINE AND WATER CAN BE ROUGHED IN THRU THE BOTTOM OF THE FOUNTAIN OR THRU THE WALL.
4. INSTALLATION TO BE COMPLETED IN ACCORDANCE WITH MANUFACTURER'S SPECIFICATIONS.
5. DO NOT SCALE DRAWING.
6. THIS DRAWING IS INTENDED FOR USE BY ARCHITECTS, ENGINEERS, CONTRACTORS, CONSULTANTS AND DESIGN PROFESSIONALS FOR PLANNING PURPOSES ONLY. THIS DRAWING MAY NOT BE USED FOR CONSTRUCTION.
7. ALL INFORMATION CONTAINED HEREIN WAS CURRENT AT THE TIME OF DEVELOPMENT BUT MUST BE REVIEWED AND APPROVED BY THE PRODUCT MANUFACTURER TO BE CONSIDERED ACCURATE.
8. CONTRACTOR'S NOTE: FOR PRODUCT AND COMPANY INFORMATION VISIT [www.CADdetails.com/info](http://www.CADdetails.com/info) AND ENTER REFERENCE NUMBER 3354-8.8.





## ORIGINAL SERIES WALL MOUNTED DRINKING FOUNTAIN SPECIFICATIONS

### WATER QUALITY (LEAD FREE)

Section 9, California Proposition 6 and the Federal Safe Drinking Water Act. One piece weld construction with MDF standard 3/16" wall thickness.

### ■ STANDARD

OR

### ■ STAINLESS STEEL

One piece weld construction with MDF standard 304 schedule 10 stainless steel.

### RECEPTOR BOWL

18 gauge electro-polished stainless steel bowl. Bowl overlaps pedestal, preventing buildup of residue in visual drinking area. Optional stainless steel Bowl Strainer recommended for areas with sand.

### BUBBLER HEAD

Stainless steel anti-squirt head (weighing a pound and a half) mounted with a lock nut and washer to prevent tampering. Lock nut pin holds bubbler in locked position to prevent twisting or turning. The MDF bubbler head has a unique design that features a steady stream trajectory and a built in natural shield from contamination.

### PUSH BAR

304 stainless steel with circumference exceeding 8.6". Mushroom style push bar overlaps and prevents sand and other objects from sticking push bar in the ON position. Stainless steel bubbler housing standard.

### CONTROL VALVE

Requires less than 5 lbs to operate. Non-cartridge O-ring valve delivers steady stream of water through an adjustable valve. This valve design is to operate and function at 30 to 80 PSI. Ideal operating pressure is 60 PSI.

### WATER SUPPLY (LEAD FREE)

Maintenance free reinforced nylobraid tubing - **this tubing is not plastic**. It is supplied with a 1/2" MIP threaded inlet with stainless steel strainer. Union fittings at every connection.

### FINISH

Oven baked powder coat. Choice of colors are:  green,  blue,  black,  red,  yellow,  orange,  brown and  white. Textured color choices:  emerald,  sapphire,  pyrite,  text-black,  burgundy,  gold vein,  copper and  sand-stone. Stainless steel models are powder coated for added protection. The color  chrome is available for stainless steel models only.

### INSTALLATION

The Wall Mounted drinking fountain is designed to be anchored to a wall (concrete, masonry, etc.) with anchor bolts through a mounting plate that is welded to the fountain. MDF offers standard wall mount and pedestal wall mount drinking fountains. An optional stainless steel carrier is recommended for all standard wall mounts. The pedestal wall mount is flush with the ground and bolted to the wall. The pedestal wall mount works extremely well when specified for remodeling.

### WINTERIZATION

Shut off water and drain down.

### WARRANTY

One year warranty, labor not included.

### SHIPPING WEIGHT

Model 410 WM..... 85 lbs.	Model 410 WMSS..... 85 lbs.
Model 440 WM* .. 135 lbs.	Model 440 WMSS*.. 135 lbs.

\*Meets ADA for High and Low

**MOST DEPENDABLE FOUNTAINS, INC.™**  
5705 COMMANDER DR. • ARLINGTON, TN 38002-0587  
www.mostdependable.com  
(901)867-0039



# LIMITED PRODUCT WARRANTY

Most Dependable Fountains, Inc.™

Most Dependable Fountains, Inc.™ warrants that all of its products are guaranteed against defective material or poor workmanship for a period of **one year from date of shipment**. Most Dependable Fountains, Inc.™ liability under this warranty shall be discharged by furnishing without charge any goods, or part thereof, which shall appear to the Company upon inspection to be of defective material or not of first class workmanship. Most Dependable Fountains, Inc.™ will not be liable for the cost of repairs, alterations or replacements, or for any expense connected therewith made by the owner or his agents. Most Dependable Fountains, Inc.™ will not be liable for any damages caused by defective materials or poor workmanship, except for replacements, as provided above. Buyer agrees that Most Dependable Fountains, Inc.™ has made no other warranties either expressed or implied in addition to those above stated. The products manufactured by Most Dependable Fountains, Inc.™ is warranted to function if installation and maintenance instructions provided are adhered to. The units also must be used for the purpose for which they were intended.

