

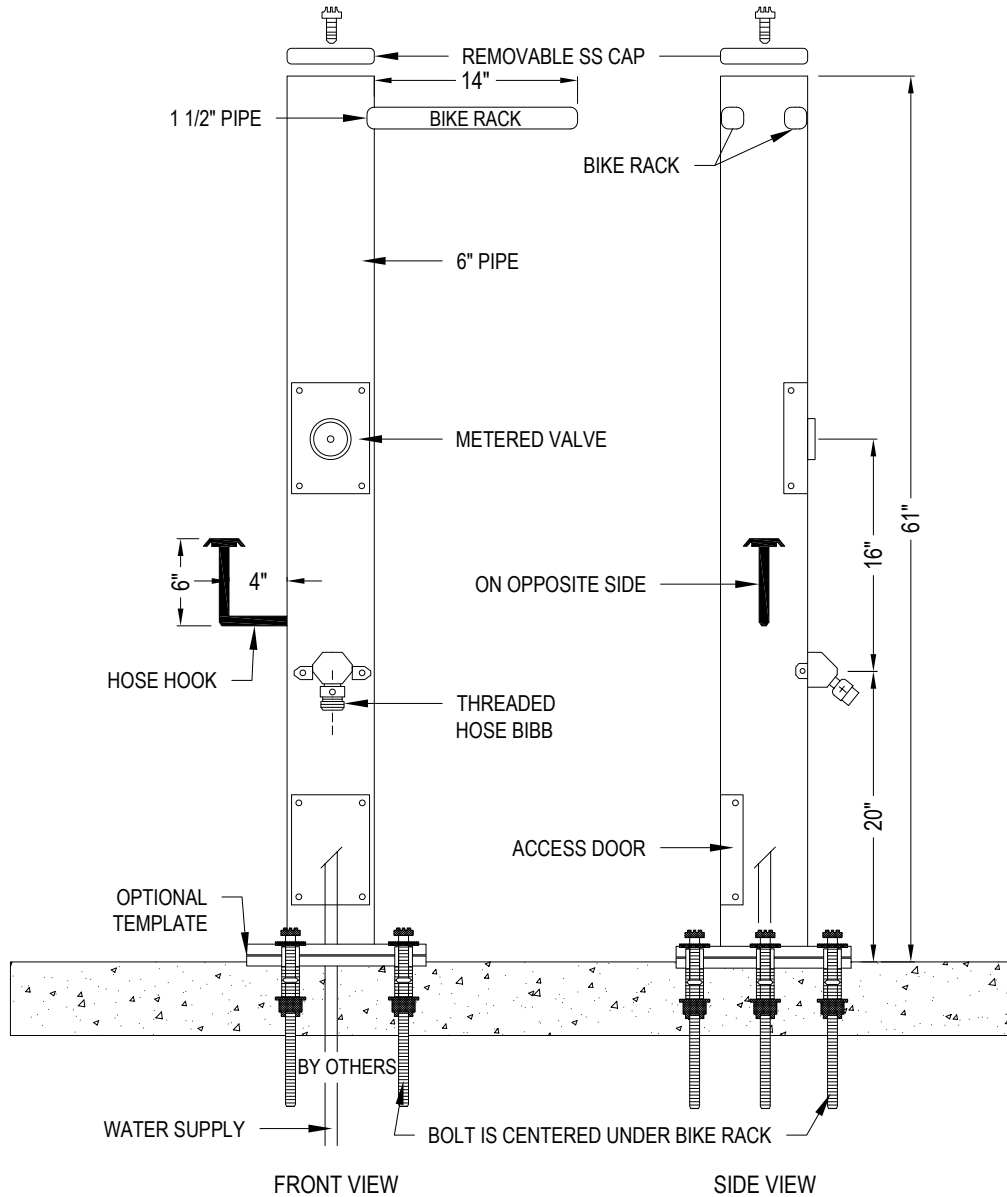
**Most  
Dependable  
Fountains, Inc.**

---

**OPERATIONS MANUAL**

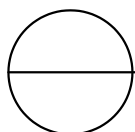
**MODEL:  
150 SM & 150 SMSS**

Most Dependable Fountains, Inc<sup>™</sup>  
5705 Commander Drive  
Arlington, TN 38002  
901-867-0039  
[www.mostdependable.com](http://www.mostdependable.com)



**NOTES:**

1. INSTALLATION TO BE COMPLETED IN ACCORDANCE WITH MANUFACTURER'S SPECIFICATIONS.
2. DO NOT SCALE DRAWING.
3. THIS DRAWING IS INTENDED FOR USE BY ARCHITECTS, ENGINEERS, CONTRACTORS, CONSULTANTS AND DESIGN PROFESSIONALS FOR PLANNING PURPOSES ONLY. THIS DRAWING MAY NOT BE USED FOR CONSTRUCTION.
4. ALL INFORMATION CONTAINED HEREIN WAS CURRENT AT THE TIME OF DEVELOPMENT BUT MUST BE REVIEWED AND APPROVED BY THE PRODUCT MANUFACTURER TO BE CONSIDERED ACCURATE.
5. CONTRACTOR'S NOTE: FOR PRODUCT AND COMPANY INFORMATION VISIT [www.CADdetails.com/info](http://www.CADdetails.com/info) AND ENTER REFERENCE NUMBER 3354-25.3.



**MODEL 150 SM**

BIKE RACK AND RINSE STATION W/ OPTIONAL TEMPLATE





# Bike Rinse Station Specifications

STANDARD PEDESTAL  
OR  
 STAINLESS STEEL PEDESTAL

One piece weld construction with MDF standard 3/16" wall thickness.

One piece weld construction with MDF standard 304 schedule 10 stainless steel.

PUSH BAR

304 stainless steel with circumference exceeding 8.6". Mushroom style push bar overlaps and prevents sand and other objects from sticking push bar in the ON position. Stainless steel bubbler housing standard.

CONTROL VALVE

Requires less than 5 lbs to operate. Slow closing metered valve. This valve design is to operate and function at 30 to 80 PSI. Ideal operating pressure is 60 PSI.

WATER SUPPLY (LEAD FREE)

Maintenance free reinforced nylobraid tubing — **this tubing is not plastic**. It is supplied with a 1/2" MIP threaded inlet with stainless steel strainer. Union fittings at every connection. Supply line stops above grade. Water Filter is standard on this model.

FINISH

**Oven baked powder coat color choices:**

- Green,  Blue,  Black,  Red,  Brown,  White,  Teal,  Umbria Grey

**Textured color choices:**

- Emerald,  Sapphire,  Textured Black,  Pyrite,  Sandstone,  Gold Vein,  Copper

**The color CHROME is an available option for Stainless Steel (SS) models only.**

- Chrome

\*Stainless steel models are powder coated for added protection.\*

INSTALLATION

Surface Mount installation is designed to be anchored on top of a new or existing surface (concrete, etc.) For a new surface, anchor bolts are to be used through the attached mounting plate. Surface Mount Fountains come standard with an access door with vandal resistant stainless steel screws.

WINTERIZATION

Shut off water and drain down.

WARRANTY

One year warranty, labor not included.

SHIPPING WEIGHT

Model 150 SM ..... 140 lbs  
Model 150 SMSS ..... 140 lbs

MOST DEPENDABLE FOUNTAINS, INC™

5705 Commander Dr.  
Arlington, TN 38002

[mostdependable.com](http://mostdependable.com)  
(901) 867-0039



# INSTALLATION INSTRUCTIONS

Most Dependable Fountains, Inc.™

All **SM (surface mount)** products are designed to be installed on the surface of a new or existing concrete slab. Your contractor needs to provide a 1 ½” PVC drain line (**when applicable**) and water line thru finish grade. Connections are made to our SM products thru our access door, as shown on detail drawings. The water tubing is provided with a ½” male iron pipe connection. This is an excellent location for a cutoff valve. Surface Mount units are anchored to the existing concrete by means of ½” concrete shields with bolts or we recommend ½” quick bolts.

**Note:** We offer an optional template which is designed to be poured in the concrete slab. It comes with the necessary vandal resistant stainless steel bolts and washers needed to anchor.

---

All **DB (direct bury)** products are designed to be installed to a depth of 14” below grade. MDF provides 1 ½” PVC drain line inside the pedestal (**when applicable**) to point of connection by others. MDF also provides reinforced nylobraid flexible tubing with a ½” male iron pipe thread for connection to water supply by others. MDF recommends an optional valve box using a PVC conduit to the pedestal. By using this option you have complete control of your product.

**Individual detail drawings available online or by request.**



For more information:

Most Dependable Fountains, Inc.™

[www.mostdependable.com](http://www.mostdependable.com)

[Info@mostdependable.com](mailto:Info@mostdependable.com)

901-867-0039

# LIMITED PRODUCT WARRANTY

Most Dependable Fountains, Inc.™

Most Dependable Fountains, Inc.™ warrants that all of its products are guaranteed against defective material or poor workmanship for a period of **one year from date of shipment**. Most Dependable Fountains, Inc.™ liability under this warranty shall be discharged by furnishing without charge any goods, or part thereof, which shall appear to the Company upon inspection to be of defective material or not of first class workmanship. Most Dependable Fountains, Inc.™ will not be liable for the cost of repairs, alterations or replacements, or for any expense connected therewith made by the owner or his agents. Most Dependable Fountains, Inc.™ will not be liable for any damages caused by defective materials or poor workmanship, except for replacements, as provided above. Buyer agrees that Most Dependable Fountains, Inc.™ has made no other warranties either expressed or implied in addition to those above stated. The products manufactured by Most Dependable Fountains, Inc.™ is warranted to function if installation and maintenance instructions provided are adhered to. The units also must be used for the purpose for which they were intended.



# Color Options

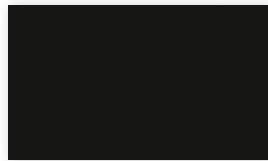
## **SMOOTH: Available for Standard & Stainless Steel Units**



Green



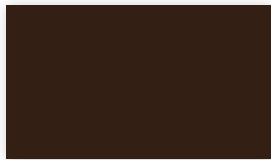
Blue



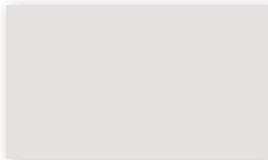
Black



Red



Brown



White

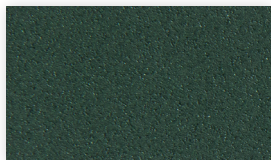


Teal

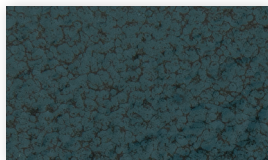


Umbria Grey

## **TEXTURED: Available for Standard & Stainless Steel Units**



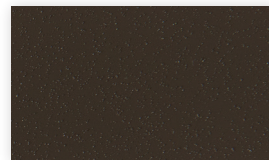
Textured Emerald



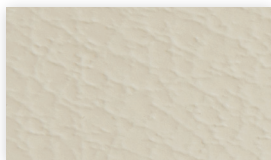
Textured Sapphire



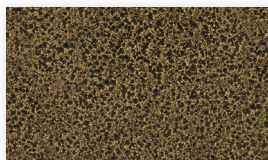
Textured Black



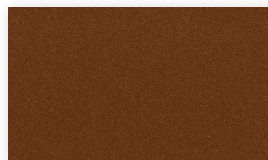
Textured Pyrite



Textured Sandstone

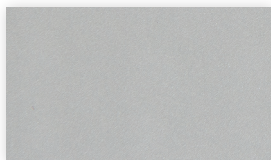


Textured Gold Vein



Textured Copper

## **CHROME: Available for Stainless Steel Units Only**



Chrome

\* Colors featured are stock colors. Color samples are replications of actual finishes and may vary slightly.