

**Most  
Dependable  
Fountains, Inc.**

---

**OPERATIONS MANUAL**

**MODELS:**

**530 SM & 530 SMSS**

Most Dependable Fountains, Inc<sup>™</sup>

5705 Commander Drive

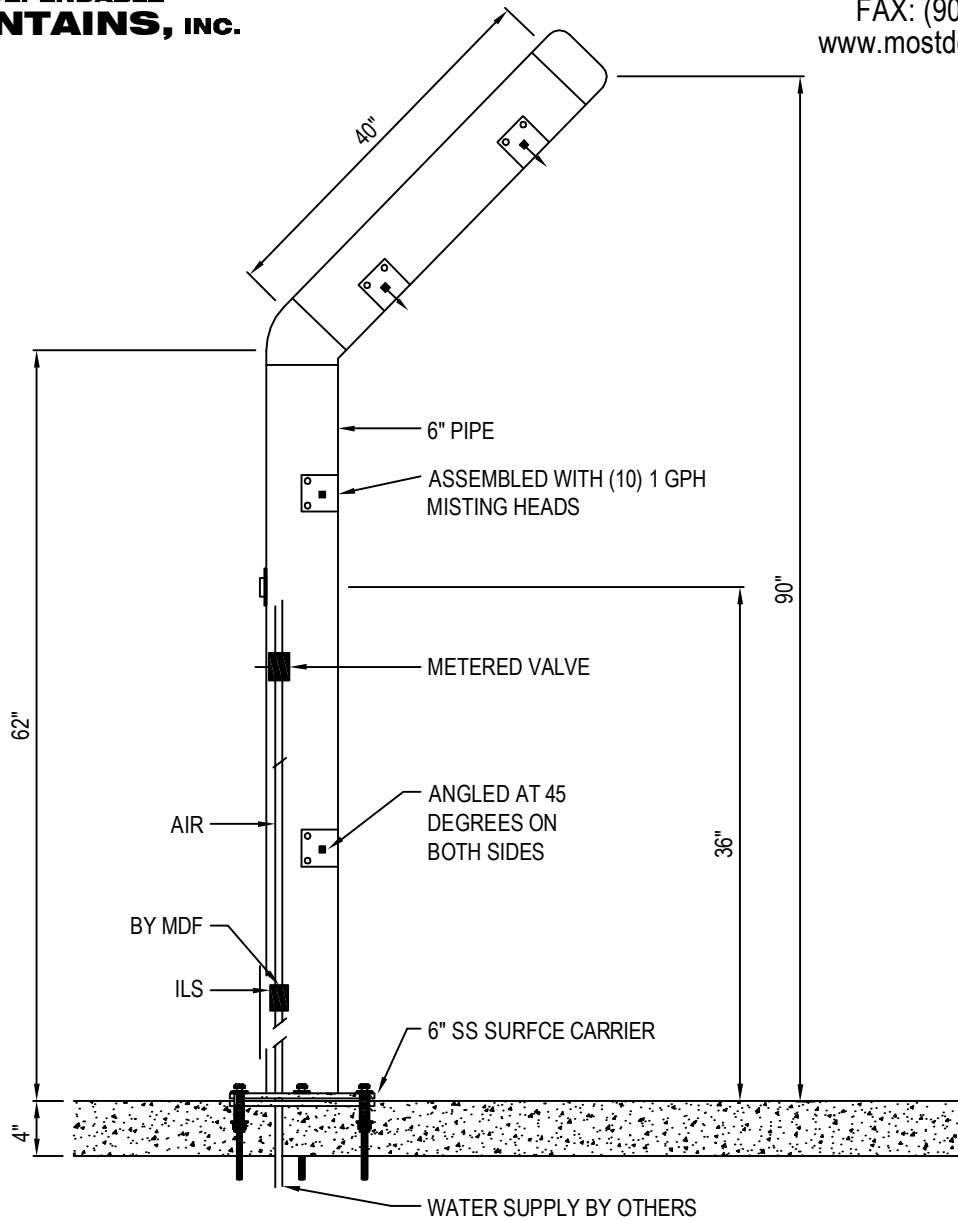
Arlington, TN 38002

800-552-6331

[www.mostdependable.com](http://www.mostdependable.com)



MOST DEPENDABLE FOUNTAINS, INC.  
 5705 COMMANDER DR. P.O. BOX 587  
 ARLINGTON, TN 38002-0587  
 TOLL FREE: 1-800-552-6331  
 PHONE: (901) 867-0039  
 FAX: (901) 867-0159  
 www.mostdependable.com



**NOTES:**

1. MISTING STATION COMES STANDARD WITH 6" STAINLESS STEEL SURFACE CARRIER.
2. INSTALLATION TO BE COMPLETED IN ACCORDANCE WITH MANUFACTURER'S SPECIFICATIONS.
3. DO NOT SCALE DRAWING.
4. THIS DRAWING IS INTENDED FOR USE BY ARCHITECTS, ENGINEERS, CONTRACTORS, CONSULTANTS AND DESIGN PROFESSIONALS FOR PLANNING PURPOSES ONLY. THIS DRAWING MAY NOT BE USED FOR CONSTRUCTION.
5. ALL INFORMATION CONTAINED HEREIN WAS CURRENT AT THE TIME OF DEVELOPMENT BUT MUST BE REVIEWED AND APPROVED BY THE PRODUCT MANUFACTURER TO BE CONSIDERED ACCURATE.
6. CONTRACTOR'S NOTE: FOR PRODUCT AND COMPANY INFORMATION VISIT [www.CADdetails.com/info](http://www.CADdetails.com/info) AND ENTER REFERENCE NUMBER 3354-11.2.





# MISTER SPECIFICATIONS

**STANDARD PEDESTAL**

One piece weld construction with MDF standard 3/16" wall thickness.

OR

**STAINLESS STEEL PEDESTAL**

One piece weld construction with MDF standard 304 schedule 10 stainless steel.

**PUSH BAR**

304 stainless steel with circumference exceeding 8.6". Mushroom style push bar overlaps and prevents sand and other objects from sticking push bar in the ON position. Stainless steel bubbler housing standard.

**SPRAY HEADS**

Please refer to written product descriptions below.

**CONTROL VALVE**

Requires less than 5 lbs to operate. This valve design is to operate and function at 30 to 80 PSI. Ideal operating pressure is 60 PSI. One valve with an approximate run time of 30 to 40 seconds.

**INSTALLATION**

**Surface Mount** installation, is designed to be anchored on top of an existing surface (concrete, etc.) with anchor bolts through a mounting plate that is welded to the unit. Surface mount carrier recommended for all surface mount installations. Access door standard on all pedestal units.

**FINISH**

Oven baked powder coat. Choice of colors are:  green,  blue,  black,  red,  yellow,  orange,  brown and  white. Textured color choices:  emerald,  sapphire,  pyrite,  text-black,  burgundy,  gold vein,  copper and  sand-stone. Stainless steel models are powder coated for added protection. The color  chrome is available for stainless steel models only.

**WINTERIZATION**

Shut off water and drain down. Remove valve during winter months.

**WARRANTY**

One year warranty, labor not included.

**SHIPPING WEIGHT**

Model 515 SM.....	130 lbs.	Model 535 SM.....	150 lbs.	Model 572 SM. ....	228 lbs.
Model 515 SMSS.....	130 lbs.	Model 535 SMSS..	150 lbs.	Model 572 SMSS..	228 lbs.
Model 530 SM.....	161 lbs.	Model 570 SM.....	188 lbs.		
Model 530 SMSS.....	161 lbs.	Model 570 SMSS..	188 lbs.		

Above specifications apply with these notes:

Model 515 - Pedestal Mister. Two sided unit with six heads on each side. Manufactured with twelve 1 GPH misting heads.

Model 535 - Pedestal Mister. 360 degree unit with eight misting heads at top. Manufactured with eight 1 GPH misting heads.

Model 530 - Pedestal Mister. Arched mister with ten misting heads. Manufactured with ten 1 GPH misting heads.

Model 570 - Pedestal Mister with accessible drinking fountain. Manufactured with four 1 GPH misting heads.

Model 572 - Pedestal Mister with both high and low ADA drinking fountains. Manufactured with four 1 GPH misting heads.

**MOST DEPENDABLE FOUNTAINS, INC.™**

**(800) 552-6331 • (901) 867-0039 • Fax (901) 867-4008**

5705 COMMANDER DR. • ARLINGTON, TN 38002-0587

[www.mostdependable.com](http://www.mostdependable.com)

# INSTALLATION INSTRUCTIONS

Most Dependable Fountains, Inc.™

All **SM (surface mount)** products are designed to be installed on the surface of a new or existing concrete slab. Your contractor needs to provide a 1 ½” PVC drain line (**when applicable**) and water line thru finish grade. Connections are made to our SM products thru our access door, as shown on detail drawings. The water tubing is provided with a ½” male iron pipe connection. This is an excellent location for a cutoff valve. Surface Mount units are anchored to the existing concrete by means of ½” concrete shields with bolts or we recommend ½” quick bolts.

**Note:** We offer an optional template which is designed to be poured in the concrete slab. It comes with the necessary vandal resist stainless steel bolts and washers need to anchor.

---

All **DB (direct bury)** products are designed to be installed to a depth of 14” below grade. MDF provides 1 ½” PVC drain line inside the pedestal (**when applicable**) to point of connection by others. MDF also provides reinforced nylobraid flexible tubing with a ½” male iron pipe thread for connection to water supply by others. MDF recommends an optional valve box using a PVC conduit to the pedestal. By using this option you have complete control of your product.

**Individual detail drawings available Online or by request.**



For more information:  
Most Dependable Fountains, Inc.™  
[www.mostdependable.com](http://www.mostdependable.com)  
[Info@mostdependable.com](mailto:Info@mostdependable.com)  
800-552-6331  
901-867-0039

# LIMITED PRODUCT WARRANTY

Most Dependable Fountains, Inc.™

Most Dependable Fountains, Inc.™ warrants that all of its products are guaranteed against defective material or poor workmanship for a period of **one year from date of shipment**. Most Dependable Fountains, Inc.™ liability under this warranty shall be discharged by furnishing without charge any goods, or part thereof, which shall appear to the Company upon inspection to be of defective material or not of first class workmanship. Most Dependable Fountains, Inc.™ will not be liable for the cost of repairs, alterations or replacements, or for any expense connected therewith made by the owner or his agents. Most Dependable Fountains, Inc.™ will not be liable for any damages caused by defective materials or poor workmanship, except for replacements, as provided above. Buyer agrees that Most Dependable Fountains, Inc.™ has made no other warranties either expressed or implied in addition to those above stated. The products manufactured by Most Dependable Fountains, Inc.™ is warranted to function if installation and maintenance instructions provided are adhered to. The units also must be used for the purpose for which they were intended.

