



Model 395 SM: Pet Waste Station



FINISH OPTIONS:

- | | |
|---------------------------------|---|
| <input type="checkbox"/> green | <input type="checkbox"/> textured emerald |
| <input type="checkbox"/> blue | <input type="checkbox"/> textured sapphire |
| <input type="checkbox"/> brown | <input type="checkbox"/> textured pyrite |
| <input type="checkbox"/> black | <input type="checkbox"/> textured black |
| <input type="checkbox"/> red | <input type="checkbox"/> textured burgundy |
| <input type="checkbox"/> yellow | <input type="checkbox"/> textured gold vein |
| <input type="checkbox"/> orange | <input type="checkbox"/> textured copper |
| <input type="checkbox"/> white | <input type="checkbox"/> textured sandstone |

NEW!



Shown with
OPTIONAL
Hand Sanitizer!

PEDESTAL

4" mounting post standard 3/16" wall thickness

BAG RECEPTACLES

Two 6" stainless steel dispensers holding a total of 1,200 bags with tamper proof locking lids.

TRASH RECEPTACLES

10 gallon unit with stainless steel lid

INSTALLATION

Surface Mount anchors to a concrete pad through a welded mounting plate. 10" bury in ground for Direct Bury models. Minimal assembly required.

WARRANTY

One year warranty, labor not included.

AVAILABLE OPTIONS

- Waste Bags
- Hand Sanitizer
- Surface Carrier

COMMONLY PURCHASED WITH:



440 SM with
OPTIONAL PET
FOUNTAIN



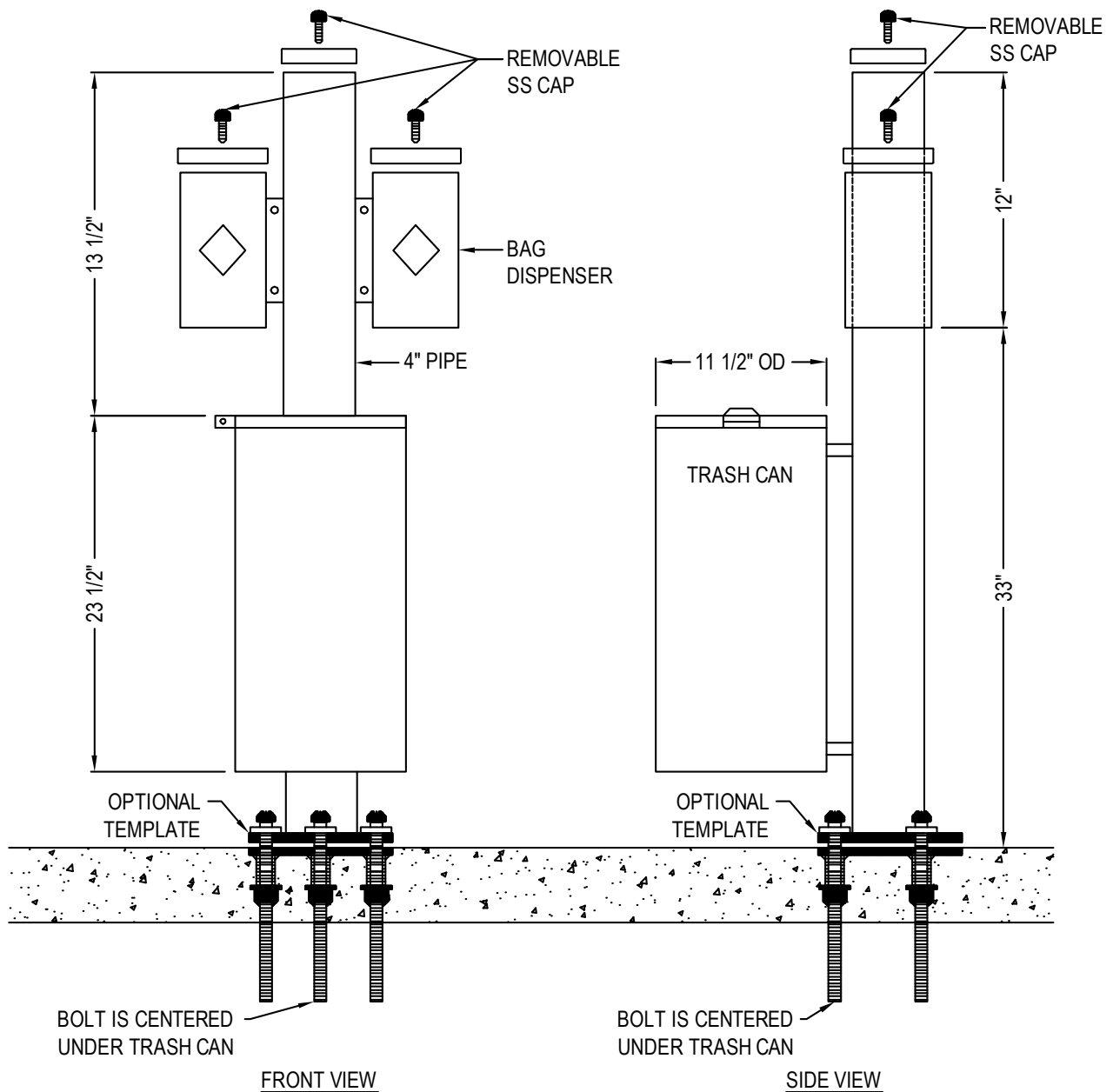
325 SM
PET FOUNTAIN/
SHOWER



370 SM
PET FOUNTAIN
with HOSE BIB &
HOSE HOOK



Model 395 SM: Pet Waste Station



NOTES:

1. INSTALLATION TO BE COMPLETED IN ACCORDANCE WITH MANUFACTURER'S SPECIFICATIONS.
2. DO NOT SCALE DRAWING.
3. THIS DRAWING IS INTENDED FOR USE BY ARCHITECTS, ENGINEERS, CONTRACTORS, CONSULTANTS AND DESIGN PROFESSIONALS FOR PLANNING PURPOSES ONLY. THIS DRAWING MAY NOT BE USED FOR CONSTRUCTION.
4. ALL INFORMATION CONTAINED HEREIN WAS CURRENT AT THE TIME OF DEVELOPMENT BUT MUST BE REVIEWED AND APPROVED BY THE PRODUCT MANUFACTURER TO BE CONSIDERED ACCURATE.
5. CONTRACTOR'S NOTE: FOR PRODUCT AND COMPANY INFORMATION VISIT www.CADdetails.com/info AND ENTER REFERENCE NUMBER 3354-9.91.